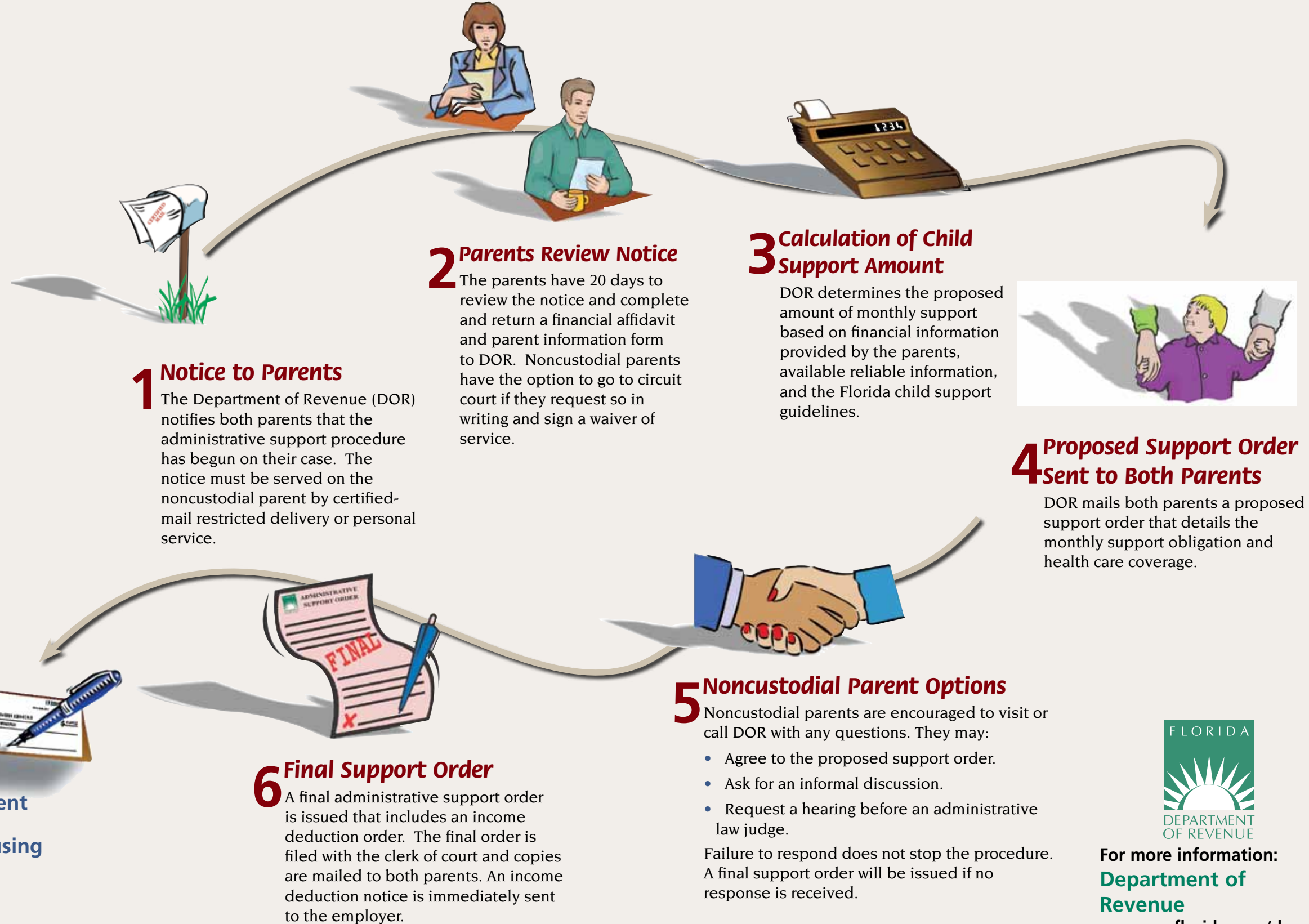


# Child Support Enforcement Program: Providing for Florida's Children

## CSE

### Administrative Support Procedure

The administrative support procedure is a streamlined and simplified method to establish a support order. It is an alternative to the judicial method. The administrative procedure can be used when paternity has been established and the location of the noncustodial parent is known. It cannot be used for cases that already have an existing order.



**Now collection efforts can begin**

- Collection from employer
- Collection from noncustodial parent
- Support orders can be enforced using administrative and judicial tools



**For more information:**  
**Department of Revenue**  
[www.myflorida.com/dor](http://www.myflorida.com/dor)  
800-622-5437