



**STATE OF FLORIDA
DEPARTMENT OF REVENUE
REVENUE COLLECTION REPORT**

November 2009

Lisa Echeverri
Executive Director

www.myflorida.com/dor

Office of Tax Research
December 10, 2009

This report does not include General Revenue sources collected by other state agencies. Those data can be obtained from the Legislative Office of Economic and Demographic Research website at <http://edr.state.fl.us/reports.htm>

SALES AND USE TAX

INSIDE..

Collection Tables2

Sales Tax by Category.....3

Corporate Tax4

Other Taxes5

Historical Graph -

Sales Tax7

Corporate Income Tax8

Documentary Stamps9

Non-Recurring Intangible10

Insurance Premium11

Communications Svsc Tax ...12

Gross Receipt Tax13

Fuel-related Taxes & Fees14

Severance Taxes15

Sales and Use Tax collections were above the estimates in November 2009 by \$17.8m (1.2%). The REC on August 11, 2009 revised down the estimates by \$347.2m (1.9%) for FY 2009-10

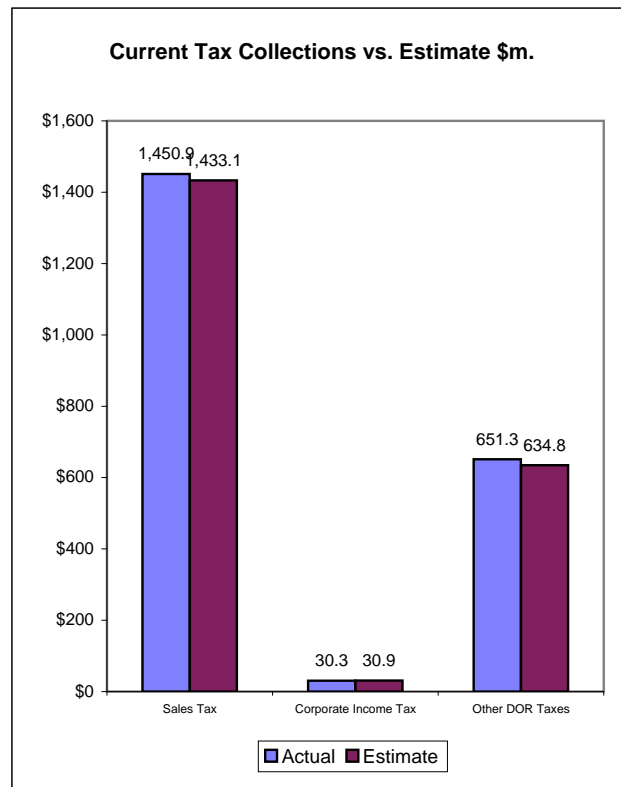
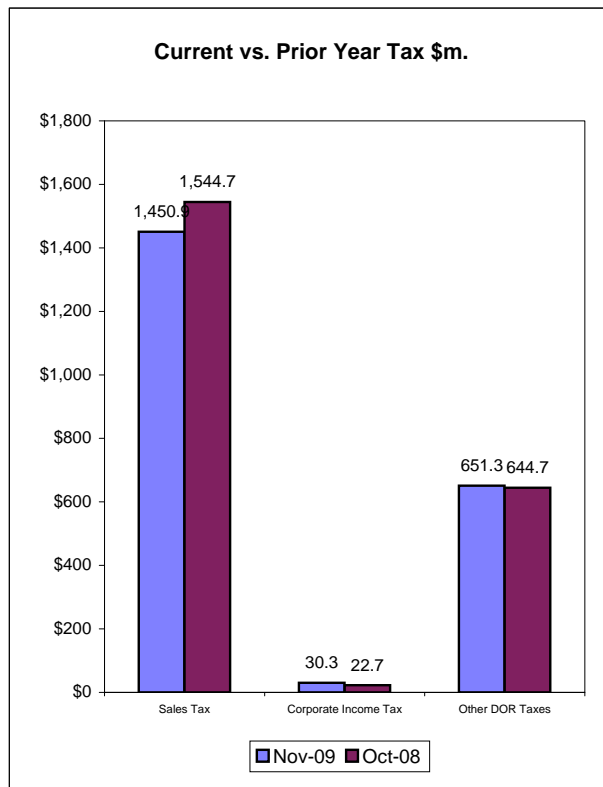
CORPORATE INCOME TAX

Corporate Income Tax collections of \$88.6m in November were below the estimates by \$0.6m (1.9%). The REC on Aug. 11, 2009 revised up the estimates by \$87.4m (5.75%) for FY 2009-10 (page

DOCUMENTARY STAMP TAX

Documentary Stamp Tax collections were above the estimates by \$13.2m (18.9%). The REC on August 11, 2009 revised up the estimates by \$118.4m (13.8%) for FY 2009-10 (page 5).

November Tax Collections - Summary Data



Department of Revenue
Total DOR Revenue Collections
November-09
(\$m)

General Revenue Sources (*)	Actual Deposits	Estimated Deposits	Amount over/(under) Estimate (1)	Percent over/(under) Estimate	Year-to-Date over/(under) Estimate
1. Sales and Use Tax	1,450.89	1,433.10	17.79	1.24%	150.05
2. Communications Services Tax	199.92	206.60	-6.68	-3.23%	-29.99
3. Corp Income and Excise Tax	30.31	30.90	-0.59	-1.90%	87.65
4. Documentary Stamp	82.98	69.80	13.18	18.88%	43.65
5. Insurance Premium	0.98	0.90	0.08	8.38%	-2.67
6. Recurring Intangible	0.03	0.00	0.03	--	
7. Non-Recurring Intangible	12.81	14.10	-1.29	-9.15%	-4.41
8. Estate Tax	0.11	0.00	0.11	--	
9. Severance-Oil & Gas	0.21	0.20	0.01	6.74%	0.11
10. Severance-Solid Mineral	0.00	0.70	-0.70	-100.00%	-2.39
11. Audit Clearing Account	8.97	9.26	-0.29	-3.13%	-0.29
12. Warrant Clearing Account	0.00	0.00	0.00	--	0.00
13. GR Sources - Refunds	-117.98	-43.60	-74.38	-170.59%	26.02
Subtotal: General Revenue Sources (*)	1,669.23	1,721.96	-52.73	-3.06%	267.73

This report does not include GR sources collected by other state agencies. Those data can be obtained from the Legislative Office of Economic and Demographic Research website at <http://edr.state.fl.us/reports.htm>

Other Tax Sources

14. Governmental Leasehold	0.02	0.00	0.02	0.00%	0.08
15. Fuel-related Taxes & Fees	279.13	271.45	7.67	2.83%	63.03
16. Gross Receipt Utility	61.42	57.40	4.02	7.00%	15.20
17. Solid Waste Return Taxes	12.15	12.48	-0.33	-2.64%	-5.73
19. Warranty Fee (Lemon Law)	0.10	0.09	0.00	4.68%	0.10
20. Miscellaneous	1.43	1.03	0.40	39.06%	0.95
21. Other Sources - Refunds	-0.76	-1.20	0.44	36.43%	0.44
Subtotal: Other Tax Sources	353.48	341.25	12.23	3.58%	74.07

Additional Deposits

22. Clerk of Court - DOR Trust Fund	17.17
23. Unemployment Compensation	76.16
24. DOR Deposits for Other Agencies	486.92
25. DOR Child Support Payment Deposits	4.16
Subtotal: Additional Deposits	584.42

GRAND TOTAL - ALL DOR DEPOSITS

NET DEPOSITS	2,607.13
Refunds included in above	118.74
GROSS DEPOSITS	2,725.87

Notes:

- (*) Represents all DOR administered taxes that are wholly or partially earmarked for the General Revenue fund excluding service charges.
- (1) Estimates are August 11 2009 REC figures adjusted to exclude net receipts from prior period tax.
- (2) All lines include applicable local option taxes administered by DOR.
- (3) This data represents bank deposits by DOR for the month indicated. Deposit totals do not necessarily match totals in the Comptroller's official accounting records due to lags and adjustments in the accounting process.

SALES TAX ...

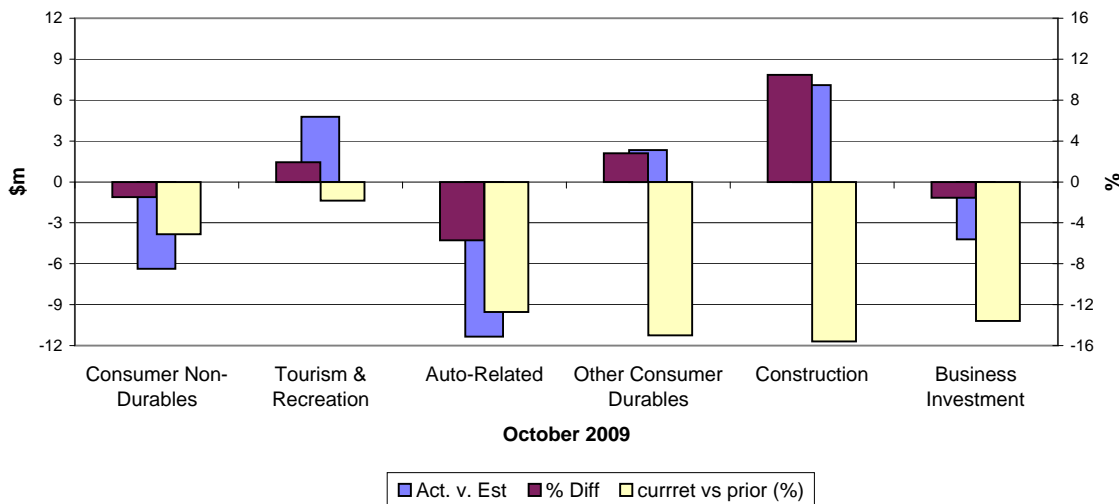
... COLLECTIONS IN November 2009 of \$1,433.1m were \$17.8m (1.2%) above the estimates. The November Sales and Use Tax collections were \$93.8m (6.1%) below the November 2008 Sales and Use Tax collections (see Graph on page 1). The REC on August 11, 2009 revised down the estimates by \$347.2m (1.9%) for FY 2009-10.

Analysis of October collections by category...

Consumer Non Durables, Auto Related and Business Investment categories were below the estimates ranging from \$8.4m to \$11.3m (1.7% to 5.7%), Auto Related being the weakest, followed by Consumer Non Durables (1.9%). Tourism Related, Other Consumer Durables and Construction categories are above the estimates ranging from 1.9% to 10.5%. Comparing to the same month's collections in 2008, all six categories were below October 2008's collections (1.8% to 15.6%), Construction being the weakest trailing by Other Consumer Durables (15.0%) and Business

Note: October 2009 sales tax collections by categories reflect September 2009 activity.

Sales Tax Over(Under) by Category



* Because collection detail is not immediately available this chart applies to last month's collections.

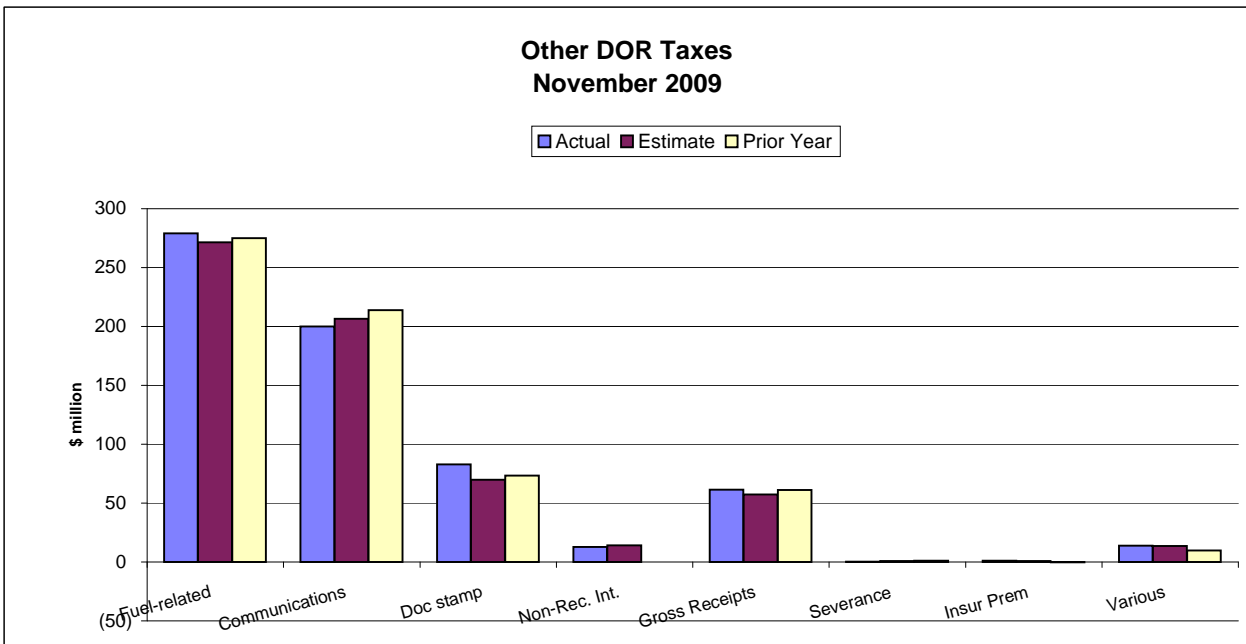
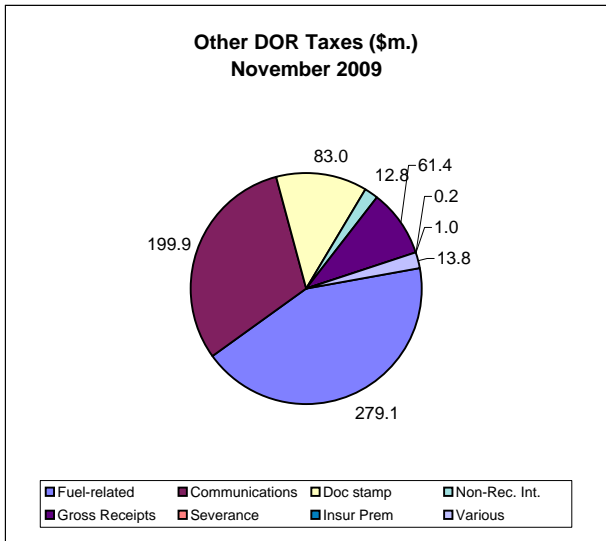
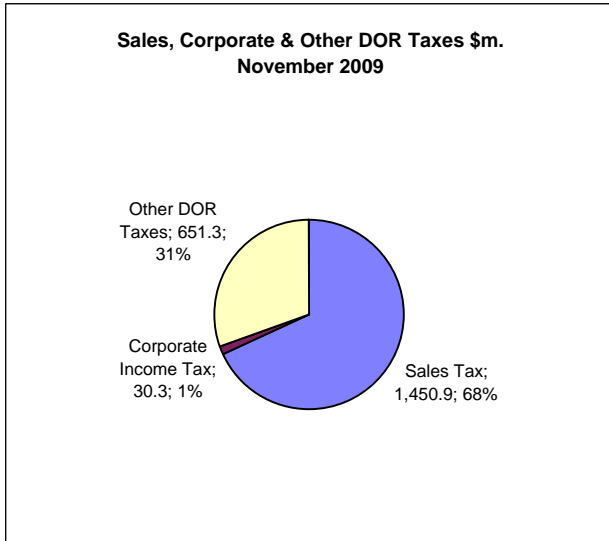
Oct-09	Actual (\$m)	Estimate (\$m)	Diff	% Diff	% Diff vs prior Year
Consumer Non-Durables	421.3	427.7	(6.4)	(1.5)	(5.1)
Tourism & Recreation	253.5	248.7	4.8	1.9	(1.8)
Auto-Related	187.4	198.7	(11.3)	(5.7)	(12.7)
Other Consumer Durables	85.7	83.4	2.3	2.8	(15.0)
Construction	75.0	67.9	7.1	10.5	(15.6)
Business Investment	265.8	270.0	(4.2)	(1.6)	(13.6)
Total Final Liability	1,288.7	1,296.4	(7.7)	(0.6)	(8.9)
Net Estimated Payments	1.1	(19.1)	20.2	(105.8)	
STATE SALES TAX	1,289.8	1,277.3	12.5	1.0	(8.5)
Local Option Taxes	127.5	136.1	(8.6)	(6.3)	(4.6)
TOTAL SALES TAX	1,417.3	1,413.4	3.9	0.3	(8.1)

* Because sales tax detail is not immediately available, this table applies to the previous month

OTHER DOR TAXES...

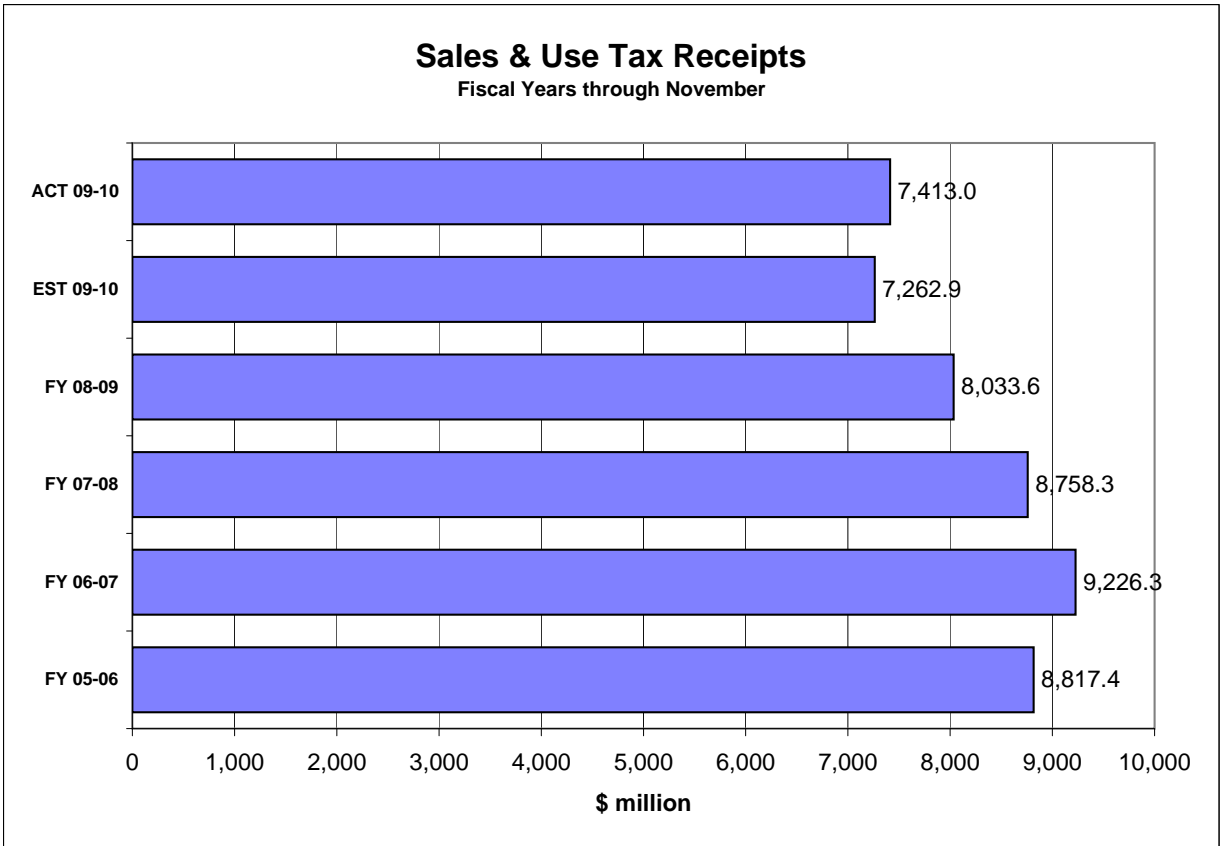
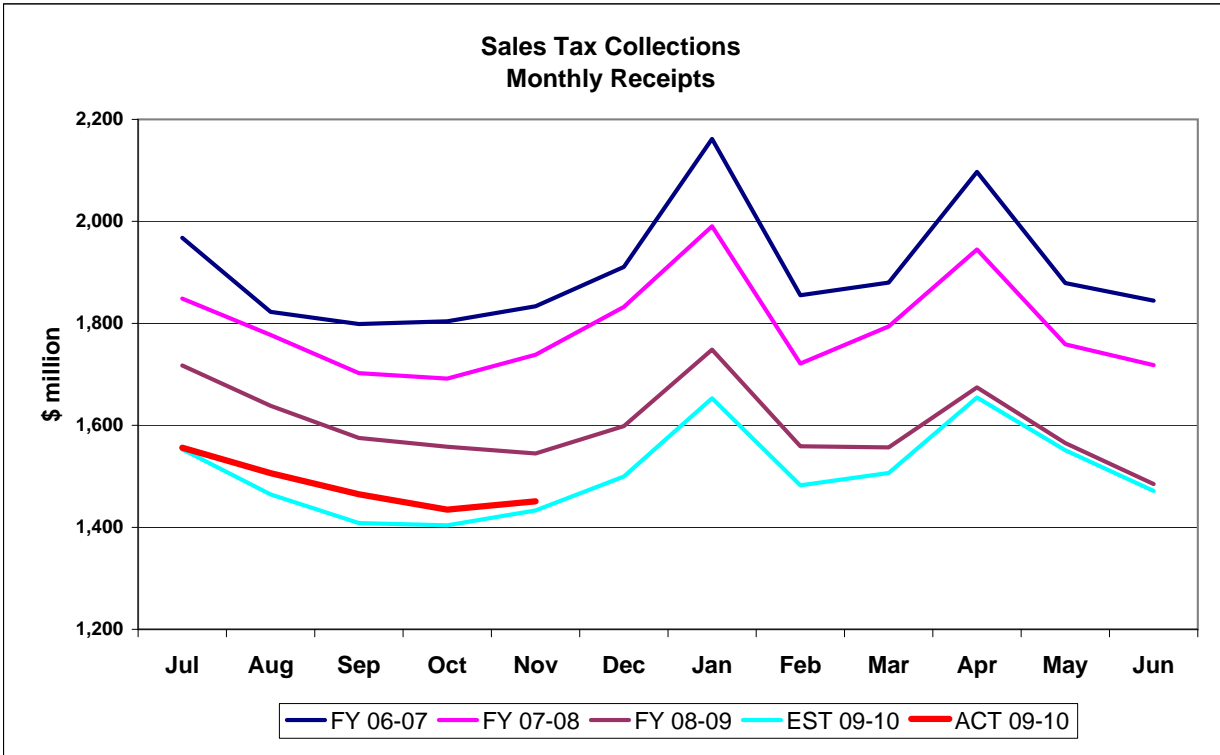
...excluding Sales Tax and Corporate Income Tax contributed \$651.3m to DOR tax collections in November, which were \$16.5m (2.6%) above the estimates. The November collections were \$6.6m (1.0%) above the same month previous year's collections. Doc Stamps collections were \$13.2m (18.9%) above the estimates. The Doc Stamps collections in November were \$9.6m (13.1%) above November 2008 collections. The non-recurring Intangible taxes in November were \$1.8m (16.9%) above November 2008 collections.. The REC on August 11, 2009 revised up the estimates for Doc Stamps by \$118.4m (13.8%) for FY 2009-10.

The November collections on Fuel Related Taxes were \$7.7m (2.8%) above the estimates. Comparing to November 2008 collections on Fuel Related Taxes, the November 2009 collections were 1.5% above. The Communications Services Tax collections were \$6.7m (3.2%) below the estimates. The Gross Receipt Utility collections for November 2009 were \$4.0m (7.0%) above the estimates. Comparing to November 2008, the Gross Receipt Utility collections in November 2009 were 0.6% above.

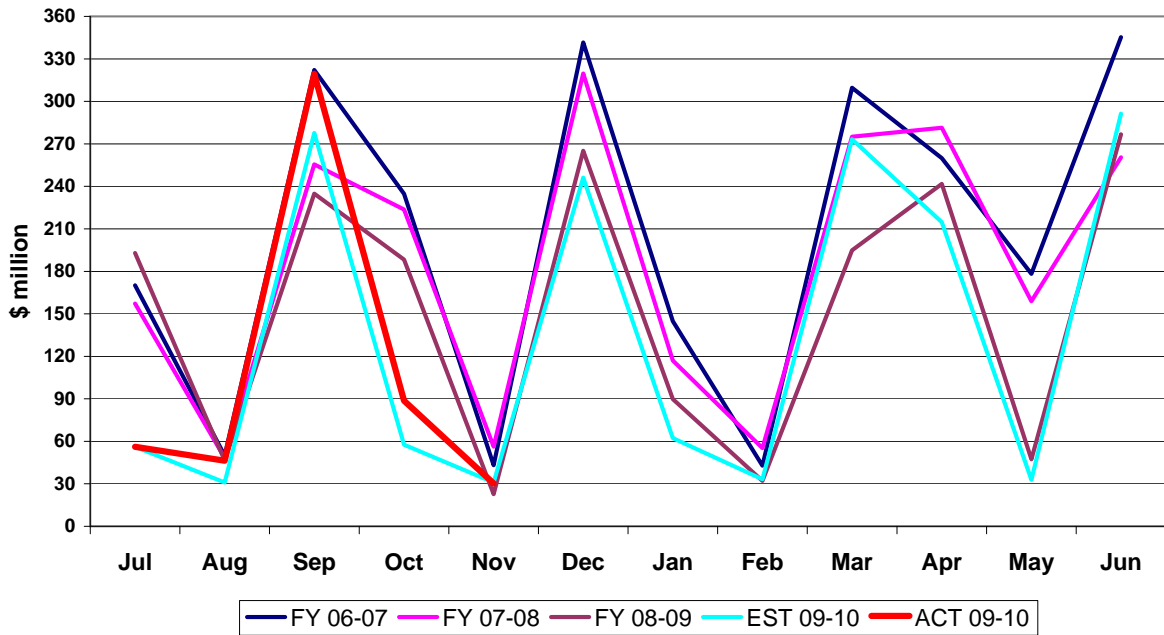


HISTORICAL COMPARISON GRAPHS

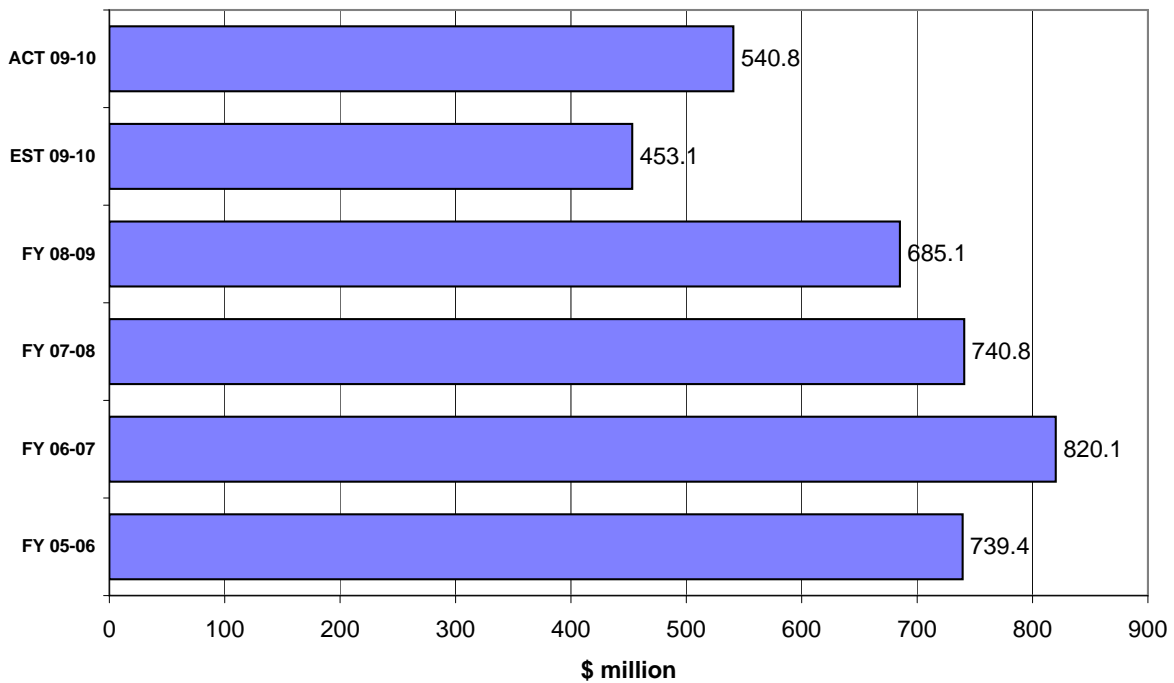
*Pages 7-16 contain graphs for individual tax sources comparing the current fiscal year's actual and projected collections and collections for the three most recent fiscal years. The upper panel on each page presents monthly collections. The lower panel compares actual and expected collections on a fiscal year basis. In the lower panel, the bars prefaced by 'ACT' depict collections through the current month of each respective year. The bar prefaced by 'EST' shows that cumulation of the current year's DOR estimate through the current month. When two bars prefaced by 'EST' are included, the upper one is based on the most recent REC estimates while the lower is based on the REC estimates obtained at the beginning of the fiscal year. DOR's estimates are derived from estimates produced by the REC in its **August 2009 consensus**. These estimates are adjusted to make them compatible with DOR's cash collection figures.*



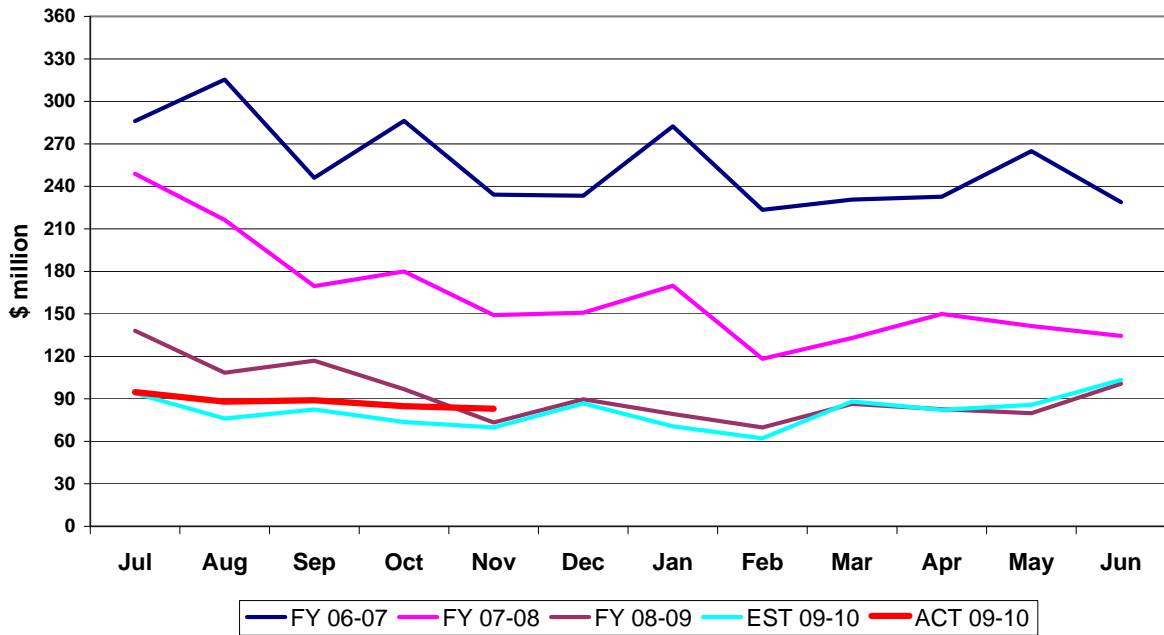
Corporate Tax Collections Monthly Receipts



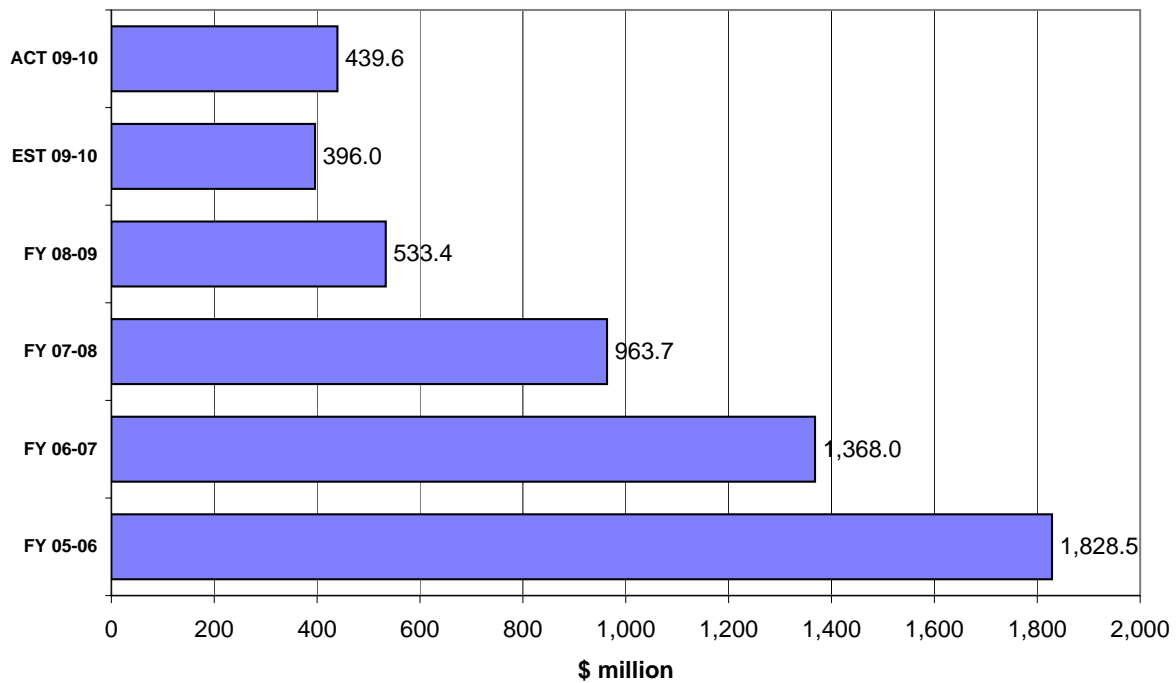
Corporate Income Tax Receipts Fiscal Years through November



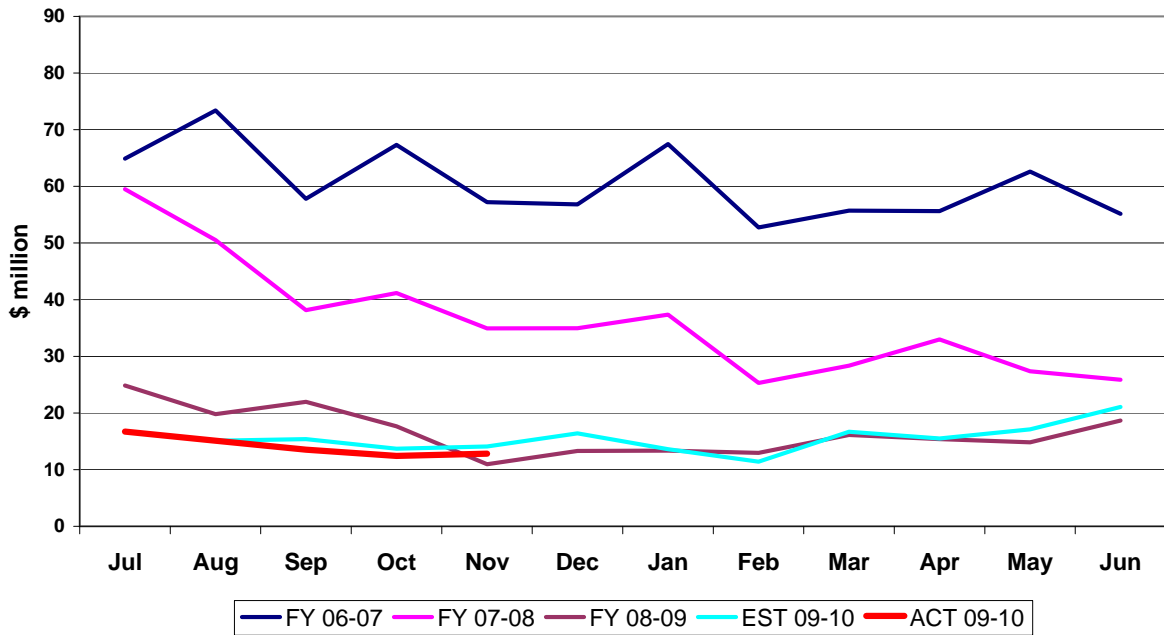
Doc Stamps Tax Collections Monthly Receipts



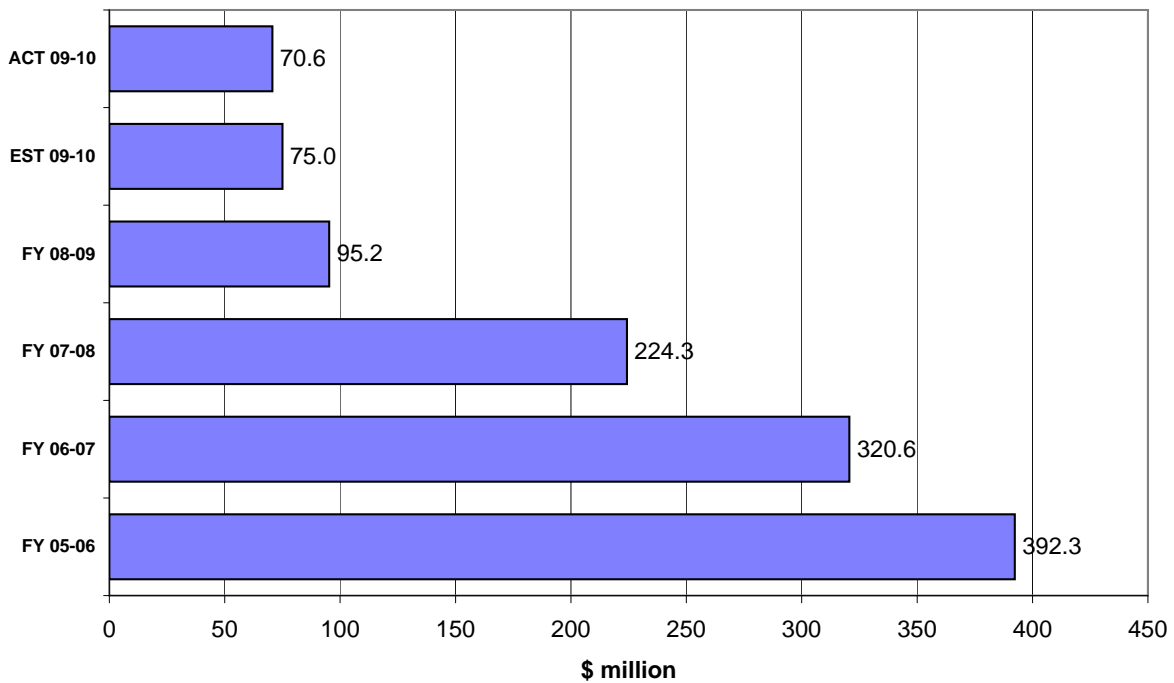
Doc Stamps Tax Receipts Fiscal Years through November



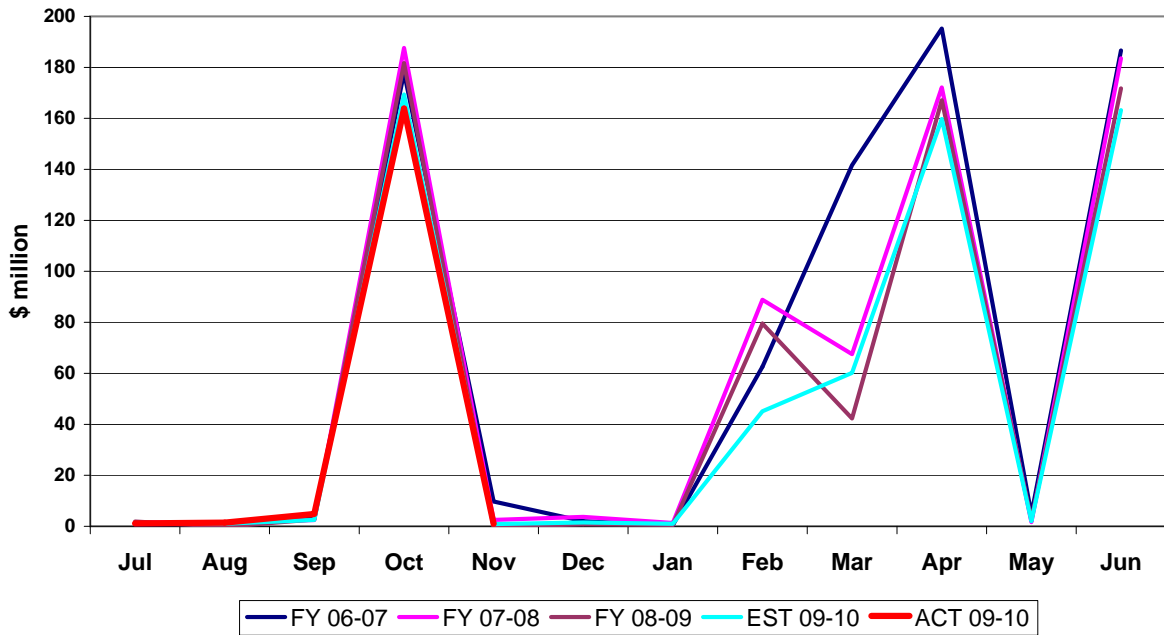
Non-Recurring Intangible Tax Collections Monthly Receipts



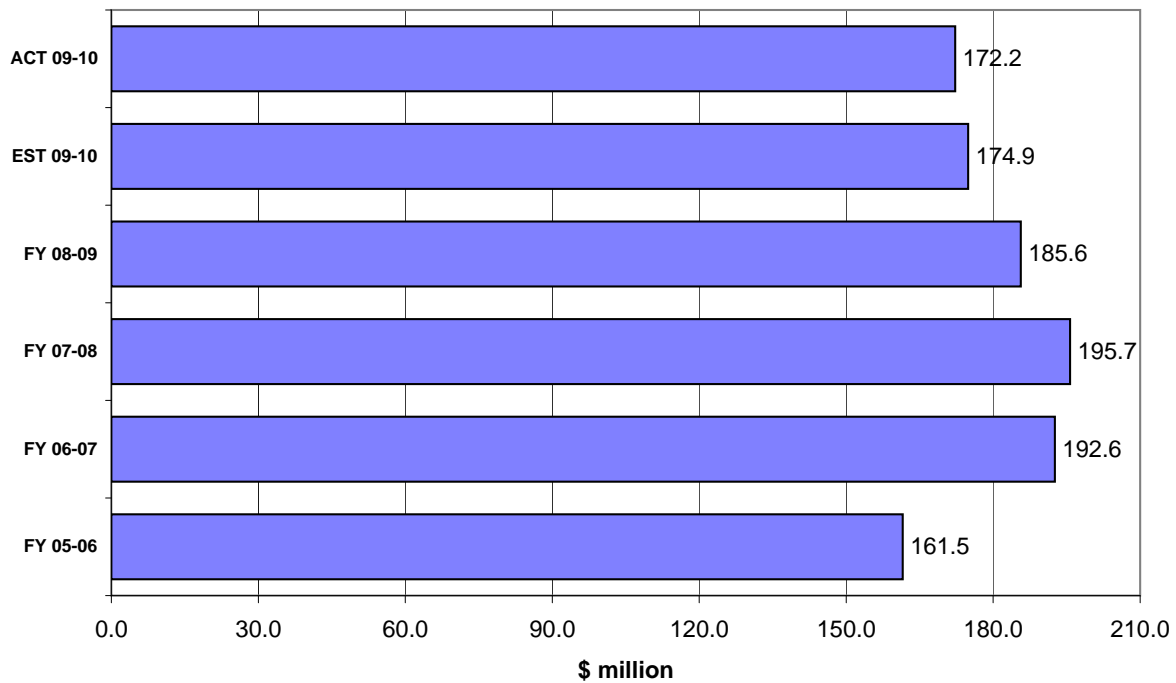
Non-Recurring Intangible Tax Receipts Fiscal Years through November



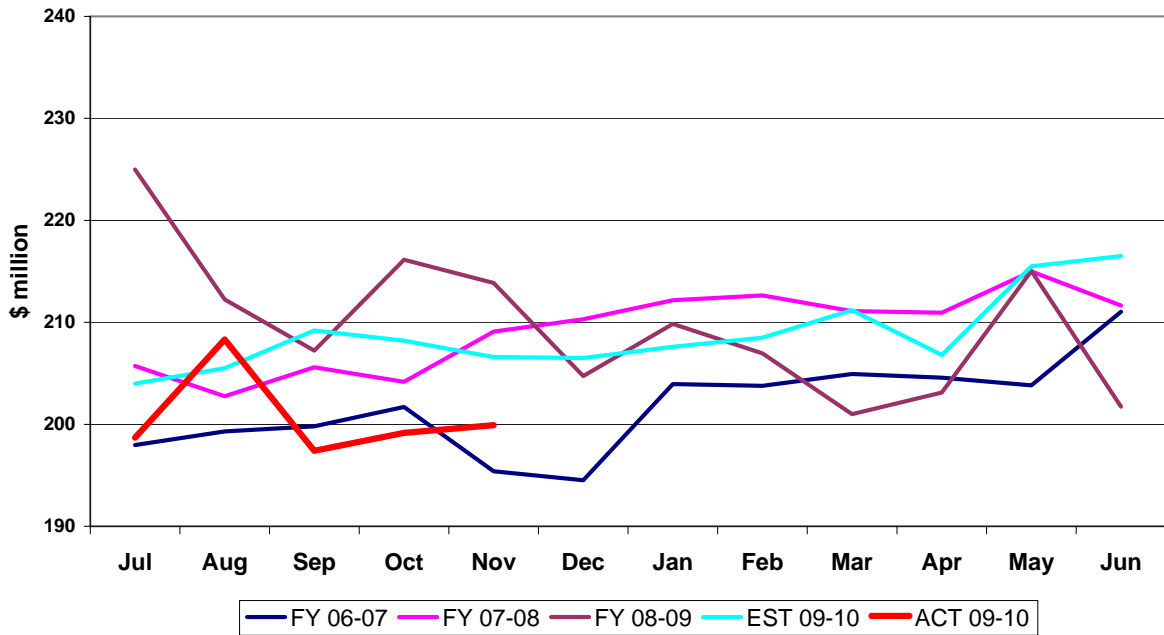
Insurance Premium Tax Collections Monthly Receipts



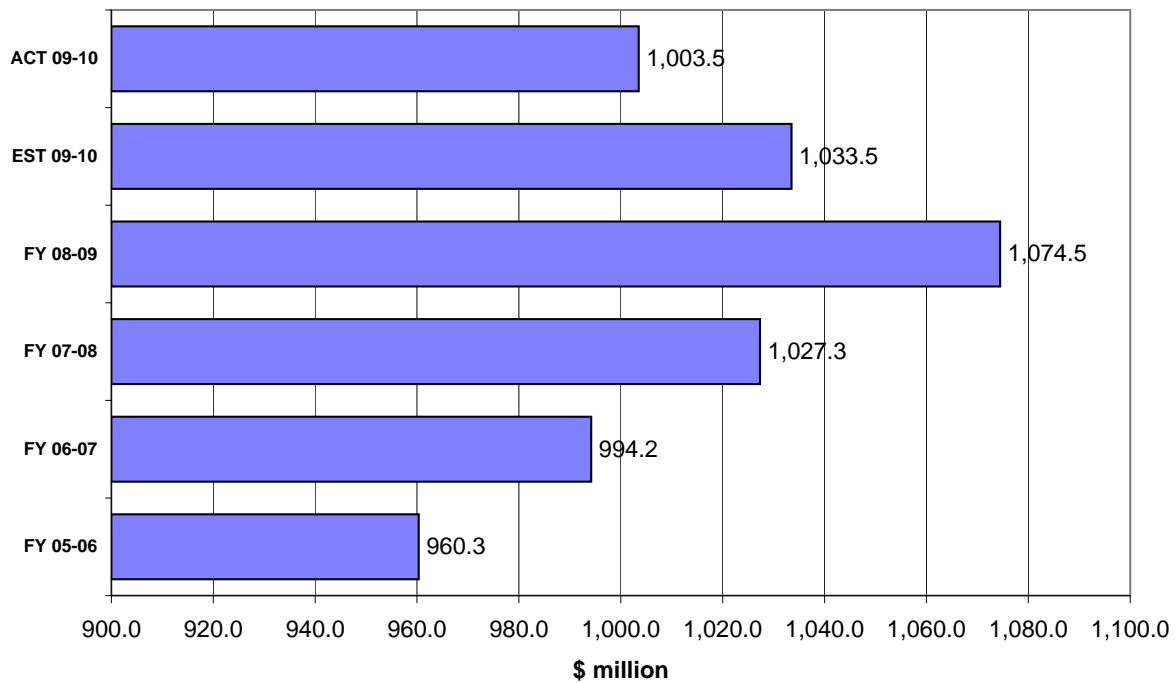
Insurance Premium Tax Receipts Fiscal Years through November



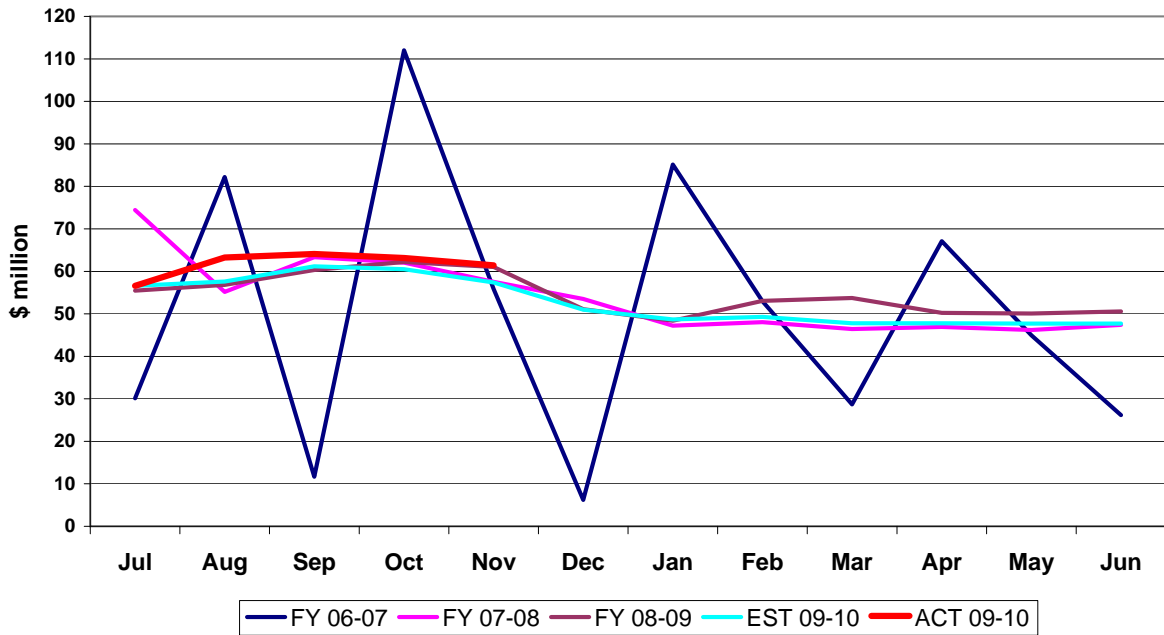
Communication Services Tax Collections Monthly Receipts



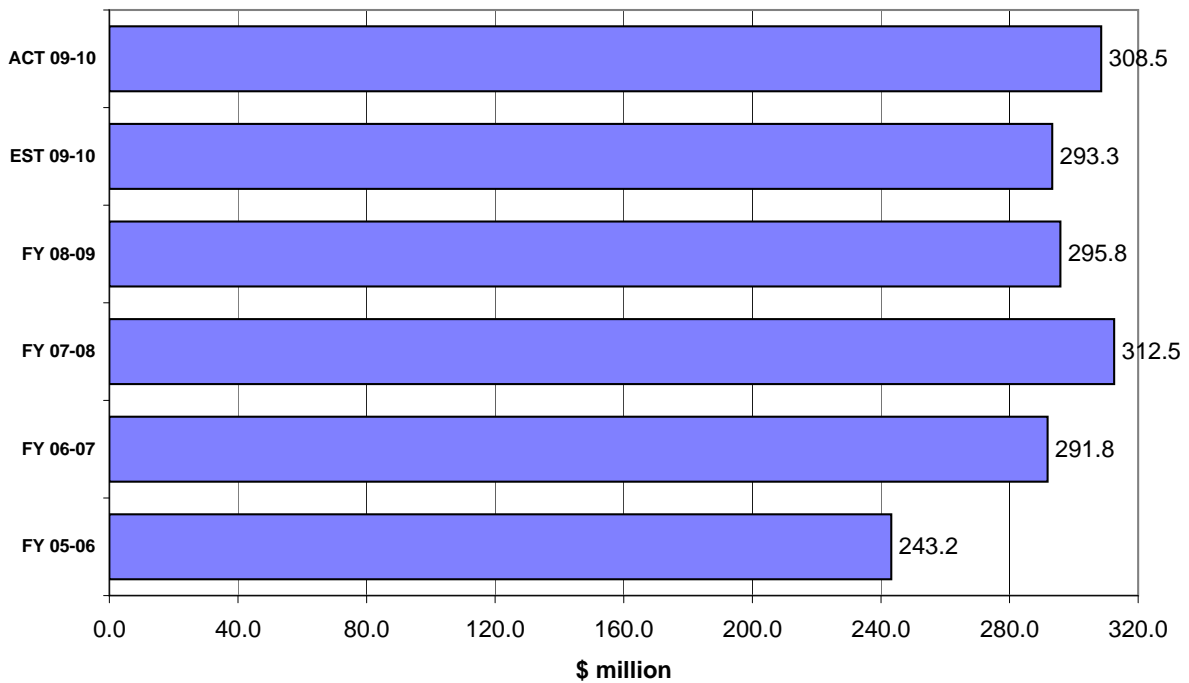
Communication Services Tax Receipts Fiscal Years through November



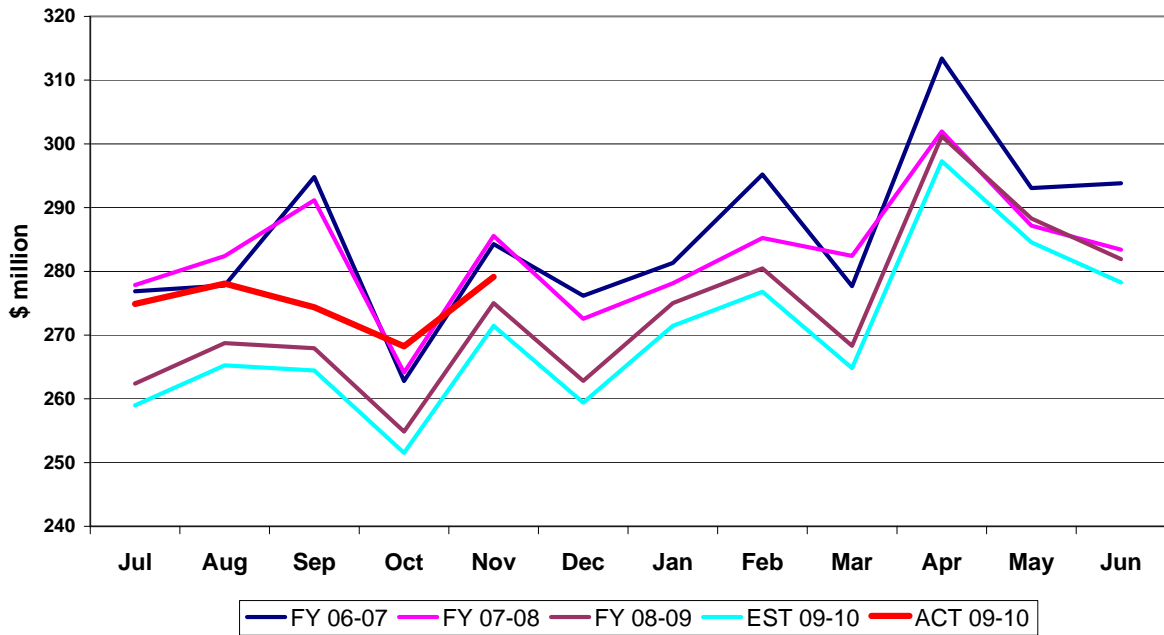
Gross Receipts Tax Collections Monthly Receipts



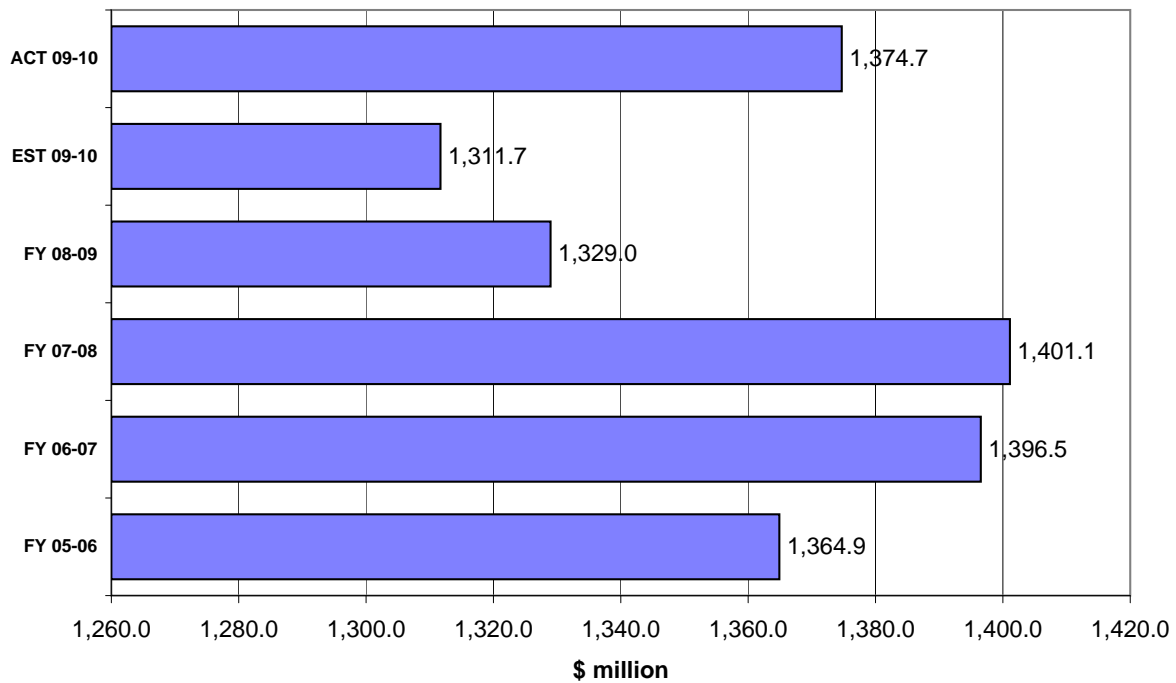
Gross Receipts Tax Receipts Fiscal Years through November



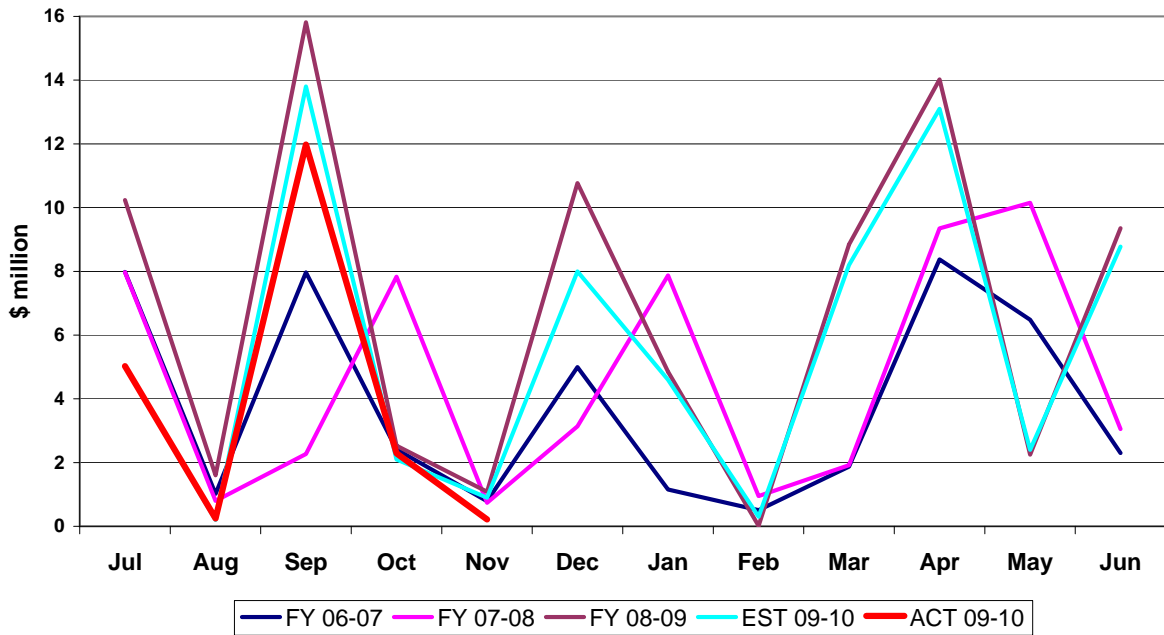
Fuel-related Tax & Fee Collections Monthly Receipts



Fuel-related Tax & Fee Receipts Fiscal Years through November



Severance Tax Collections Monthly Receipts



Severance Tax Receipts Fiscal Years through November

